

<b>Combined Counties League Premier Division Tuesday 4 February 2014 – Kick-off 7.45pm</b>			
<b>Epsom &amp; Ewell</b> (Royal blue and white shirts, Blue shorts)		<b>v.</b>	<b>Hartley Wintney</b> (Orange shirts, Orange shorts)
1	Kieran CAMPBELL	1	Graig ATKINSON
2	Sam CURRIE	2	Matt PARTLOW
3	Jamie HATFIELD (Capt)	3	Mason SAUNDERS
4	Alex McKAY	4	Marc VOCKINS
5	George MURPHY	5	Chris SMALLEY
6	Nathan AYLING	6	Tom WALSH
7	Ben HAYWARD	7	Ashley LLOYD
8	Karl DOUGLIN	8	Zac REYNOLDS
9	James COTTEE	9	Ian JONES
10	Kyle HOUGH	10	Elliot HOBDEN
11	Alex McGREGOR	11	Jack COVENTRY
12	Matt SMITH	12	Max ELWARD, Adam EVERISS
14	Carl DOWNS	14	Nick JUPP
15	Freddie MYERS	15	Carl SAUNDERS
16	Anthony PANAYI	16	Shane HOLLAMBY
17	James TAYLOR	17	Sam ARGENT
18	Ali DEWAR	18	Ryan STEPHENS
Manager: Lyndon Buckwell Assistants: Glynn Mandeville and Tony Coombe Player-Coach: Russell Banyard Physio: Ken Jones		Manager: Ben DILLON Assistants: Jason MINTON, Joe LAWLER Coaches: Steve SAUNDERS, Dan BROWNIE	

Referee: Mr. Bhupinder Gill (Cranford)

Assistants: Mr. Mark Ford (Sutton), Mr. Aiden McNulty (Wallington)

**To sponsor a match or match ball, please see Page 14**

**Next Home match**  
**Combined Counties League – Premier Division**  
**Epsom & Ewell v. Cove**  
**on Saturday 8 February 2014 at 3.00pm**



**Welcome to**

## **Epsom & Ewell v. Hartley Wintney Tuesday 4 February 2014**

We welcome you all to tonight's match with Hartley Wintney whether you are one of our visitors players, supporters and committee, tonight's match officials or our own loyal band of regulars. This is the first time we have played Hartley Wintney this season. The originally scheduled date found them having a much more exciting day (yes, even more than coming here) playing Daventry Town in the 4th qualifying round of the FA Cup. We congratulate them on that achievement which got them a big crowd in and lots of coverage on local radio. I listened to most of it as I ended up at Farnham Town v. Hanworth Villa that day.

Last season we visited Hartley Wintney in December 2012 and came away with a 4-0 win in which the score-line hugely flattered us. Our goalkeeper that day, Colin Harris, was our man of the match. Hartley Wintney gained a measure of revenge with a 4-2 win here which, from our point of view, went down as one of those days. I was reminded of that match last Saturday as Alton Town came and showed, just as Hartley did last year, that they have massively improved since the start of the season. Well done to all who braved the mad storm at the end of the game and the fallen trees on the way home.

The match at Frimley Green last Saturday became the latest postponement due to a waterlogged pitch. It looks like being an exciting end to the season with at least four teams competing for the one promotion place. Everyone at the club is fully committed to keeping our challenge going as long as possible. You can support our effort by bringing a friend up to a game, they are great value and great fun, or taking up one of our match or player sponsorships or taking a pitch square or two. See a committee member for details.

Enjoy the game and have a safe journey home afterwards.

Steve Dyke,  
 Epsom & Ewell Football Club Programme Team

Karl Douglin being closely marked at the Alton Town game  
 on Saturday 25 January 2014 by Gemma Jarman



## Cherry Red Records Combined Counties League Premier Division Table 2013-2014

Pos	Team	P	W	D	L	F	A	GD	Pts
1	South Park	23	19	1	3	76	25	+51	58
2	Camberley Town	25	17	4	4	57	23	+34	55
3	Windsor	27	17	3	7	69	39	+30	54
4	<b>Epsom &amp; Ewell</b>	<b>23</b>	<b>16</b>	<b>2</b>	<b>5</b>	<b>50</b>	<b>29</b>	<b>+21</b>	<b>50</b>
5	Westfield	25	14	2	9	42	30	+12	44
6	Molesey	25	11	7	7	45	27	+18	40
7	Farnham Town	23	11	4	8	35	32	+3	37
8	Croydon	26	11	3	12	41	51	-10	36
9	Wembley	23	10	5	8	35	30	+5	35
10	Raynes Park Vale	22	10	4	8	39	39	+0	34
11	Frimley Green	23	10	3	10	40	46	-6	33
12	Badshot Lea	23	9	5	9	36	51	-15	32
13	Hanworth Villa	21	8	7	6	43	34	+9	31
14	Hartley Wintney	20	9	3	8	42	35	+7	30
15	Mole Valley SCR	25	8	4	13	42	63	-21	28
16	Colliers Wood United	28	7	6	15	41	55	-14	27
17	Cove	23	8	2	13	46	47	-1	26
18	Alton Town	27	6	5	16	36	58	-22	23
19	Chessington & Hook Utd	22	6	4	12	34	54	-20	22
20	Ash United	26	6	3	17	37	54	-17	21
21	Horley Town	26	5	5	16	36	67	-31	20
22	Bedfont Sports	24	2	8	14	23	56	-33	14

Table dated: Saturday 1 February 2014

Latest results: Camberley Town 2-0 Chessington & Hook United,  
Windsor 0-1 Croydon

## Top Shots 2013-2014 Season

Photos by Gemma Jarman



Above: Nathan Ayling closely marks an Alton Town player.



Left: Mark Jarman keeps ahead of an Alton Town defender.



Below: Karl Douglin and Kieran Campbell before the Alton Town game.

View Lauren and Gemma Jarman's  
photos on the Club's website at

<http://www.epsomandewellfc.co.uk>

## EEFC Player in focus – Carl Downs

Photos by Gemma Jarman

Left: Carl Downs avoids a challenge from a Mole Valley SCR player (30/11/2013)



Gemma Jarman© 2013



Right: Carl Downs being pursued by a Mole Valley SCR player. (30/11/2013)

Below: Carl Downs keeps ahead of an Alton Town player (25/01/2014).



Gemma Jarman© 2014

**Position:**  
Midfielder

**Appearances:**  
This season= 24  
Total = 88

**Goals**  
This season = 0  
Total = 2

## The Manager

Good evening everyone and welcome to tonight's game against Hartley Wintney, we hope our visitors enjoy their stay with us and have a safe journey home after the game.

There's not much to say as we've had so many games called off lately. In our last two, games we beat league leaders South Park in the Cup and then we lost 3-0 at home against lowly Alton Town, so it's been a bit of a mixed bag lately.

Tonight, we're up against a team who, on their day, could beat anyone in this league so hopefully the lads will be switched on from the start and we can put on a good performance and get back to winning ways.

*Enjoy the game!*

*Lyndon*



## EEFC Twitter

follow us on  
**twitter**



**We now have 1,029 Followers!**

You can follow Epsom & Ewell Football Club by visiting our Twitter page:

<http://twitter.com/EEFCWebmaster#>

and clicking on the Follow button.



# Hartley Wintney FC History



Hartley Wintney Football Club, as our records indicate, was founded in 1897 and played in an area situated at Causeway Farm, not far from our present headquarters and adjacent to the village's golf and cricket clubs. From stories told by the older members, and from the old club records, it appears that the village side competed well against local opposition, despite the facilities not being of today's standard, with only a horse trough or the pond to remove the heavy mud from a sub-standard pitch. In 1953, the club moved to its present ground in Green Lane, known as

'The Memorial Ground'. A pavilion was erected and the team played in the Basingstoke League and, later, in the Aldershot League.

In 1973, Glynn Howell was appointed Manager and, with an influx of players, Hartley Wintney FC was put firmly on the local football map. In his six year reign, the team managed to win the Aldershot Senior League three times in succession and, on a night to remember, the Aldershot Senior Cup. In 1975, the facilities were once again improved, when a bar was built within the pavilion.

After several seasons in the ASL, Hartley applied for the Combined Counties League - a competition that replaced the Surrey Senior League - and were granted admittance. After the first couple of seasons and two changes of management, the club appointed Ian Bedford as Manager. Once again an influx of senior players gave Hartley the success they deserved. Within his three years in management, they gained trophies including the League Title (1982-1983) and Runners Up (1981-1982), Aldershot Senior Cup Winners (1980-1981), George Allen Cup Winners (1981-1982). They were also Runners Up in the League Cup (1982-1983) and Aldershot Senior Cup (1981-1982).

During this period a new Club House, which is our present H.Q., was opened by ex-Chelsea star Peter Osgood. These facilities, together with the recently improved dressing rooms, are ranked as amongst the very best in the League. David Willoughby, the then Secretary/Treasurer, and Bill Mitchell, Chairman, spent exceptional hours in the embryo stages of this venture - one of the bars is now named 'The David Willoughby Room'.

Hartley Wintney FC has come a long way, from village side in every sense of the term, to today's seven days a week modern Football Club, but it's hard working committee has succeeded in retaining a village atmosphere. In recent years, the club has invested in new floodlights costing £40,000, completely rebuilt the changing rooms at a cost of over £100,000, and erected a modern stand with seating. The Club is indebted to the volunteer workers who continue to keep the Club afloat.

The club gained promotion from Division One of the Combined Counties League in 2007-2008. But 2008-2009 began poorly and ended in relegation by a narrow margin.

# Pitch Squares Fundraising Grid

There are 200 squares and they cost £10 each. For businesses 1 square = business name and location, 2 squares = business name and phone number, 3 squares = business name, phone number and a line of text, 4 squares = business name, logo, phone number and a line of text. Visit the website for a zoom-able image of the pitch.

Total raised so far £230

11	12	13	Ink Plus Barnett Wood Lane	15	16	17	The Carter Family	19	20
31	32	33	34	35	36	37	38	39	40
51	52	53	54	Epsom Coaches 01372 731 705		57	58	59	60
71	72	73	74	75	76	77	78	79	80
91	92	dlp Builders 07816 86 52 59			96	97	98	99	100
111	112	113	114	115	116	117	118	119	120
131	132	133	134	Ian Twyford Borders 07976 157 488		137	138	139	140
151	152	Geoff Dyke	154	155	156	157	158	159	160
171	172	173	174	The Rifleman Pub	176	177	178	179	180
191	Los Amigos	193	194	195	Chips	197	198	199	Steve Dyke



# Pitch Squares Fundraising Grid

Take part in our new fundraising initiative. Buy squares and your name or business name will be added to the pitch in the programme and on the website. To buy squares, speak to a member of the Committee or email:

Steve Dyke at: [helen@helenandsteve.fsnet.co.uk](mailto:helen@helenandsteve.fsnet.co.uk)  
or EEFC Webmaster: [webmastereefc@btinternet.com](mailto:webmastereefc@btinternet.com)

1	2	Epsom & Ewell Colts			6	FC Tolworth Sports		9	10
21	22				26	27	28	29	30
		lovettfamily@ntlworld.com U8s to U18s							
41	Peachey's News	43	44	45	46	Ladysafe & Sons 020 8393 8100		49	50
61	62	63	Coops	65	66	67	68	69	70
81	Dave Abbot - Master Joiner 07949 114 727 020 8668 4432				86	87	88	89	90
101	102	103	104	105	106	107	108	109	110
121	122	123	124	125	126	Riverford Organic Foods 01903 892116		129	130
141	142	143	144	145	146	147	148	149	150
161	162	163	164	Carole & Brian Carter	166	167	168	169	170
Gent's Barbers Manor Green Rd	182	183	184	185	186	187	188	189	190

# Hartley Wintney FC History (cont)

Under a new management team of Pete Gray and John Condon, the first team rallied, finishing 5th in Combined Counties League Division One in 2009-2010, and 7th in season 2010-2011 under manager Louis King after Pete Gray had stepped down for family reasons.

The 2011-2012 season under manager Neville Roach, Assistant Mick Wollen and Coach Scott Tarr was a notable one for the club as they again achieved promotion back to the Combined Counties League Premier Division and also had a fine FA Cup run that took them to the third qualifying round, with wins against higher league opposition on the way, including away to Alresford Town (4-1), and at home to Southern Premier League Bashley (1-0) and an in-form Southern League Bideford AFC (2-1). We eventually went out after a brave performance in the Third Qualifying Round at Conference South near neighbours Basingstoke Town.

The euphoria of the cup run and promotion was dampened at the end of the 2011-2012 season when the coaching staff left to take the managerial role at Southern League Thatcham Town. The entire squad bar two players left, and so new manager Dave Tuttle was faced with the huge task of rebuilding a squad competitive enough for the Combined Counties League Premier Division. A reasonably good squad was assembled, but events behind the scenes and within the playing squad added to the pressure following a string of poor results. It led to a second change in the management setup of the first team in less than four months, with 24 year-old Ben Dillon given his first managerial position.

Jason Minton became Ben's Assistant, with Joe Lawler also joining as coach, and once again there was an almost total outflow of the players Dave Tuttle had brought to the club. Ben and Jason thus had to set about again rebuilding the squad, but by this time with Hartley well and truly set adrift at the bottom of the league and the season in full flow. Clearly something of a baptism of fire for the young managerial partnership, but their enthusiasm, belief and the introduction of a talented group of new players quickly restored the spirit around the whole club. Hartley Wintney's place in the Combined Counties League Premier was secured after a truly remarkable second half of the season thanks to the belief and commitment of the new squad and the coaching staff.

The football club has established a clear line of progression for young players with the establishment of an U18 Youth setup playing in the Southern Youth League, and a Reserve team playing in the Suburban League. The senior club has also moved to improve links with the Junior club. These factors are huge positives which the committee hopes will greatly improve the club's chances of continuing to play and maintain their position at an elevated level of amateur football.

# League Match Report

## Epsom & Ewell 0-3 Alton Town

Combined Counties League Premier Division – Saturday 25 January 2014

A healthy number of 94 supporters had gathered on this sunny and pleasant afternoon but it was the calm before the storm both on and off the pitch.

In the first half, neither side seemed to be on their game and did not really look like scoring. Nathan Ayling shot wildly over in the first minute and then James Cottee's tame shot was easily saved three minutes later.

With 13 minutes on the clock, a very promising Epsom passing move resulted in Hough shooting over whilst on the run. Alton then carved open the Blue's defence and a cross from the right saw Kieran Campbell gather the ball at the second attempt. Campbell was alert again, four minutes later, when he saved a goal-bound shot. Alton continued to threaten with a corner and a number of long throws but both Teams went in at half time without a goal.

### Half-Time: Epsom & Ewell 0-0 Alton Town

The start of the second half was uneventful, until Cottee had a chance on 52 minutes when the ball was ping ponging around Alton's box but the Epsom striker fired over the bar. A counter attack by Alton, four minutes later, saw them cross well wide. Then Karl Douglin missed the mark with a free kick. Hough latched on to the ball, four minutes later, but his unusually tame effort was easily saved. Alton then had a corner cleared and a header from a free kick went wide before Epsom failed to clear the ball on three attempts and Steve Brown strode forward and blasted the ball past Campbell to put Alton 1-0 up.

Mark 'Jarmo' Jarman had one of the best efforts of the match as his header went just wide on 73 minutes. Hough shot wide a minute later and then Campbell miscontrolled a back pass that Steve Brown shot home easily into the empty net to double the lead for Alton.

Epsom had to come forward more now and on 83 minutes, Douglin received a pass, seven yards out and being tightly marked, smashed a shot against the post which went out for a goal kick.

Alton trebled their lead to an emphatic 3-0, on 86 minutes, when Kurt Greenaway strode forwards down the left, brushed aside three poor challenges and blasted home with ease to the delight of the cheering away fans in the stand.

In an afternoon that started with bright sunshine, the last fifteen minutes were played through high winds, rain and then hail stones. Alton did not mind as they were returning home with three well-taken goals and three points.

There was still time for Epsom to shoot a free kick tamely at Alton's keeper before the final whistle blew.

**Full-Time:** Epsom & Ewell 0-3 Alton Town

Match Report by George Holland

# First Eleven Appearances and Goals

Name	Debut	2013-2014				Career Totals			
		App	Sub	Total	Goals	App	Sub	Total	Goals
Nathan AYLING	15.11.2008	25	3	28	2	97	23	120	9
Robbie BURNS	14.08.2007	7	2	9	1	202	14	216	122
Kieran CAMPBELL	29.09.2012	31	0	31	0	33	0	33	0
James COTTEE	26.11.2011	12	2	14	8	33	7	40	21
Sam CURRIE	04.08.2012	29	1	30	1	78	3	81	2
Ali DEWAR	29.10.2011	6	7	13	1	38	26	64	5
Karl DOUGLIN	03.08.2013	25	3	28	8	25	3	28	8
Carl DOWNS	17.09.2011	21	3	24	0	79	9	88	2
Jake DOWNS	29.10.2013	4	1	5	0	4	1	5	0
Russell HARTT	10.08.2013	1	1	2	0	1	1	2	0
Jamie HATFIELD	11.11.2006	25	1	26	0	231	12	243	6
Ben HAYWARD	07.03.2007	21	3	24	1	227	27	254	17
Jordayne HENRY	10.08.2013	2	1	3	0	2	1	3	0
Kyle HOUGH	14.08.2007	29	1	30	21	254	12	266	137
Reece JACKSON *	03.08.2013	4	2	6	2	4	2	6	2
Mark JARMAN	08.08.2009	18	6	24	14	115	45	160	66
Richard LEDIJU	13.08.2013	0	3	3	0	0	3	3	0
Dale MARVELL *	15.01.2000	0	1	1	0	250	40	290	80
Alex McGREGOR	08.08.2009	20	6	26	5	138	51	189	21
Alex McKAY	20.12.2008	12	4	16	3	53	19	72	5
George MURPHY	19.03.2013	16	2	18	2	25	3	28	2
Antony MYERS	23.12.2006	9	5	14	1	67	28	95	7
Anthony PANAYI	14.11.2010	20	3	23	2	117	12	129	4
Matte PIERSON	09.10.2013	1	0	1	0	1	0	1	0
Montell SHAW	N/A	0	0	0	0	0	0	0	0
Matt SMITH	08.08.2009	0	13	13	0	86	37	123	10
James TAYLOR	26.08.2013	14	3	17	1	14	3	17	1

Up to and including: **ALTON TOWN** (CCLP) (Saturday 25 January 2014) (32 games)

\* No longer at the club.

## This Season's Match Sponsors

Opponent	Date	Match Sponsor	Ball Sponsor
Westfield	06.08.2013	Epsom & Ewell FC Committee	
Whyteleafe (FA Cup)	21.08.2013	"Boys at the half-way line"	Peter Beddoe
Croydon	26.08.2013	Marvin Hough	
Bedfont Sports	07.09.2013	Geoff and Steve Dyke	
Chessington & Hook	14.09.2013		John Ward
Whyteleafe (FA Vase)	21.09.2013	Paul Merritt	
Wembley	24.09.2013		
Badshot Lea	05.10.2013		
Raynes Park Vale	15.10.2013	Tony Jeffcoate	
Frimley Green	19.10.2013	The Jarman Family	
Chertsey Town (SSC)	23.10.2013	Mark and Carmel Murphy	
Chipstead (SCC)	29.10.2013		
Mole Valley SCR	30.11.2013	In Memory of Doug and Liz Burns	
Horley Town	28.12.2013		
Farnham Town	11.01.2014		
Alton Town	25.01.2014		
Hartley Wintney	04.02.2014		
Cove	08.02.2014		
Windsor	11.02.2014	EEFC Reserves	
Molesey	01.03.2014	John Herbert	
Colliers Wood United	08.03.2014	Joe Hagan P.G.A. Golf Professional 01932 267666	
Ash United	22.03.2014	Tony Coombe	
Camberley Town	05.04.2014		
South Park	19.04.2014		
Hanworth Villa	26.04.2014		

If you like to sponsor a match or the match ball this season, please contact a Committee Member for details. Cost £40 (match) includes two free tickets and two matchday programmes, £25 (match ball) includes one free ticket and one matchday programme.

**Epsom & Ewell Football Club**  
would like to thank all the above sponsors for their support!

## CCL Premier Division Clubs – Results

**Saturday 25 January 2014**

**FA Carlsberg Vase – 4th Round**

HANWORTH VILLA	2-7	Eastbourne United (SCL1)	210
----------------	-----	--------------------------	-----

**Combined Counties League – Premier Division**

Badshot Lea	A-A	Croydon	
Camberley Town	3-1	Ash United	109
Chessington & Hook United	P-P	Raynes Park Vale	
Colliers Wood United	3-1	Horley Town	32
EPSOM & EWELL	0-3	Alton Town	94
Frimley Green	P-P	Wembley	
Hartley Wintney	P-P	Windsor	
Mole Valley SCR	P-P	Bedfont Sports	
Molesey	0-3	Cove	47
South Park	P-P	Farnham Town	

**Tuesday 28 January 2014**

**Combined Counties League – Premier Division**

Ash United	2-6	South Park	31
Bedfont Sports	P-P	Badshot Lea	
Farnham Town	P-P	Camberley Town	
Hartley Wintney	P-P	Chessington & Hook United	
Molesey	P-P	Croydon	
Raynes Park Vale	P-P	Frimley Green	
Westfield	P-P	Alton Town	

**Saturday 1 February 2014**

**Combined Counties League – Premier Division**

Alton Town	P-P	Bedfont Sports	
Ash United	P-P	Westfield	
Camberley Town	2-0	Chessington & Hook United	97
Cove	P-P	South Park	
Farnham Town	P-P	Mole Valley SCR	
Frimley Green	P-P	EPSOM & EWELL	
Hanworth Villa	P-P	Colliers Wood United	
Horley Town	P-P	Molesey	
Raynes Park Vale	P-P	Hartley Wintney	
Wembley	P-P	Badshot Lea	
Windsor	0-1	Croydon	234

# CCL Premier Division Clubs – Fixtures

**Tuesday 4 February 2014**

## Combined Counties League – Premier Division

Ash United	v.	Hanworth Villa	19.30
Chessington & Hook United	v.	Molesey	19.45
Cove	v.	Badshot Lea	19.45
EPSOM & EWELL	v.	Hartley Wintney	19.45
Frimley Green	v.	Bedfont Sports	19.45
South Park	v.	Wembley	19.45

**Wednesday 5 February 2014**

## Combined Counties League – Premier Division

Mole Valley SCR	v.	Camberley Town	19.45
-----------------	----	----------------	-------

**Saturday 8 February 2014**

## Combined Counties League – Premier Division

Badshot Lea	v.	Hanworth Villa	19.45
Bedfont Sports	v.	Ash United	19.45
Chessington & Hook United	v.	Hartley Wintney	19.45
Colliers Wood United	v.	Alton Town	19.45
Croydon	v.	Frimley Green	19.45
EPSOM & EWELL	v.	Cove	19.45
Mole Valley SCR	v.	Horley Town	19.45
Molesey	v.	Raynes Park Vale	19.45
South Park	v.	Windsor	19.45
Wembley	v.	Camberley Town	19.45
Westfield	v.	Farnham Town	19.45

**Tuesday 11 February 2014**

## Cherry Red Records Premier Challenge Cup – 3rd Round

Chessington & Hook United	v.	Wembley	19.45
---------------------------	----	---------	-------

# Player Sponsorship (Cont.)



**Ben Hayward**

Awaiting sponsor



**Karl Douglin**

Jeff and Arnold Pye



**Alex McGregor**

Joe Hagen PGA Golf  
01932 267666



**James Taylor**

Joy and Bill Taylor



**Kyle Hough**

EEFC Webmaster



**Matt Smith**

Awaiting sponsor



**Carl Downs**

Awaiting sponsor



**George Murphy**

Mr & Mrs Bexley



**Ali Dewar**

ID & JD Services Limited



**Antony Myers**

Awaiting sponsor



**Mark Jarman**

Ann Summers Ltd



**Robbie Burns**

Charles Bowry MM

**If you would like to sponsor a player this season, please speak to a member of the Committee. Cost per player £40 for the season.**



## Player Sponsorship



**Lyndon Buckwell**  
(Manager)

Ezara Beddoe



**Tony Coombe**  
(Assistant Manager)

Awaiting sponsor



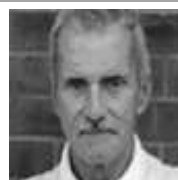
**Glynn Mandeville**  
(Assistant Manager)

Awaiting sponsor



**Russell Banyard**  
(Player-Coach)

Awaiting sponsor



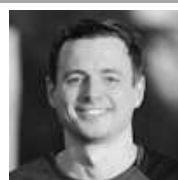
**Ken Jones**  
(Physio)

Awaiting sponsor



**Jamie McConnell**  
(Kit man)

Awaiting sponsor



**Jamie Hatfield**  
(Captain)

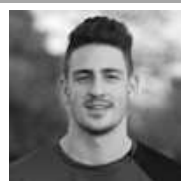
Peter Lumm



**Kieran Campbell**  
Up and Out Lofts Ltd.



**Sam Currie**  
John Bonner



**Anthony Panayi**  
Douglas Burns and  
Paul Marshall



**Alex McKay**  
George Holland of  
Epsom Hospital Radio



**Nathan Ayling**  
B&T Plant Hire  
Tel: 020 8335 3477

If you would like to sponsor a player this season, please speak to a member of the Committee. Cost per player £40 per season.

## CCL Premier Division Clubs – Fixtures

**Tuesday 11 February 2014 (Continued)**

### Combined Counties League – Premier Division

Alton Town	v.	Camberley Town	19.45
Bedfont Sports	v.	Badshot Lea	19.45
EPSOM & EWELL	v.	Windsor	19.45
Farnham Town	v.	Frimley Green	19.45
Hanworth Villa	v.	South Park	19.30
Horley Town	v.	Cove	19.45
Molesey	v.	Hartley Wintney	19.45
Raynes Park Vale	v.	Mole Valley SCR	19.45

**Saturday 15 February 2014**

### Combined Counties League – Premier Division

Alton Town	v.	Badshot Lea	15.00
Ash United	v.	Colliers Wood United	15.00
Cove	v.	Bedfont Sports	15.00
Croydon	v.	Molesey	15.00
Farnham Town	v.	Windsor	15.00
Frimley Green	v.	Camberley Town	15.00
Hanworth Villa	v.	Mole Valley SCR	15.00
Hartley Wintney	v.	EPSOM & EWELL	15.00
Horley Town	v.	Chessington & Hook United	15.00
Raynes Park Vale	v.	South Park	15.00
Westfield	v.	Wembley	15.00

**Tuesday 18 February 2014**

### Combined Counties League – Premier Division

Bedfont Sports	v.	Molesey	19.45
Chessington & Hook United	v.	Westfield	19.45
South Park	v.	EPSOM & EWELL	19.45

**Wednesday 19 February 2014**

### Cherry Red Records Premier Challenge Cup – 3rd Round

Mole Valley SCR	v.	Cove	19.45
-----------------	----	------	-------

### Combined Counties League – Premier Division

Croydon	v.	Hartley Wintney	19.45
---------	----	-----------------	-------

# Fixtures, Results and Line-ups 2013-2014

**Key: CCL** – Combined Counties League Premier Division, **CCL PCC** – Combined Counties League Premier Challenge Cup, **FAC** – FA Challenge Cup, **FAV** – FA Challenge Vase, **SSC** – Surrey Senior Cup  
**SCC** – Southern Combination Cup  
 Number in brackets after name denotes player who was substituted. Epsom & Ewell score noted first.

No	DATE	DAY	COMP	H/A	OPPONENTS	F/T	90m	H/T	SCORERS	1	2	3	4	5	6	7	8	9	10	11	SUB 1	SUB 2	SUB 3	ATT
1	03.08.2013	Sat	CCLP	A	Alton Town	1-0		0-0	Panayi	Campbell	Currie	Hatfield	Panayi	McKay	Ayling	Hayward	Douglin	Jackson	Hough	McGregor	Smith (2)	Marvell (11)		97
2	06.08.2013	Tue	CCLP	H	WESTFIELD	2-1		1-0	McKay (2)	Campbell	Currie	Hatfield	Panayi	McKay	Ayling	Hayward	Douglin	Jackson	Hough	McGregor	Smith (8)	Burns (9)		71
3	10.08.2013	Sat	CCLP	A	Mole Valley SCR	3-0		2-0	McGregor, Hough (2, 1 pen)	Campbell	Currie	Hatfield	Panayi	Hartt	Ayling	Hayward	Downs	Burns	Hough	McGregor	Myers (11)	Henry (10)	Murphy (4)	43
4	13.08.2013	Tue	CCLP	A	Camberley Town	2-0		0-0	Dewar, Hough	Campbell	Currie	Hatfield	Panayi	McKay	Ayling	Hayward	Downs	Burns	Hough	Dewar	Lediju (11)			91
5	17.08.2013	Sat	FAC EP	A	Whyteleafe	3-3		3-1	Myers, Hough, Jackson	Campbell	Currie	Hatfield	Panayi	Murphy	Douglin	Hayward	Downs	Burns	Hough	Myers	Jackson (7)	Smith (11)		118
6	21.08.2013	Wed	FAC EPR	H	WHYTELEAFE	1-6		0-3	Hough (pen)	Campbell	Currie	Hatfield	Panayi	Murphy	Douglin	Dewar	Downs	Burns	Hough	Myers	Jarman (7)	McGregor (11)	Ayling (8)	93
7	24.08.2013	Sat	CCLP	A	Cove	3-0		1-0	McGregor, Ayling, Hough	Campbell	Currie	Hatfield	McKay	Murphy	Ayling	Hayward	Douglin	Jackson	Hough	McGregor	Smith (2)	Downs (6)	Hartt (8)	48
8	26.08.2013	Mon	CCLP	H	CROYDON	2-0		1-0	Douglin, Jackson	Campbell	Currie	Hatfield	McKay	Murphy	Downs	Hayward	Douglin	Jackson	Hough	McGregor	Taylor (5)	Smith (9)	Burns (11)	57
9	31.08.2013	Sat	CCLP	A	Ash United	3-2		2-2	Hough (2), Burns	Campbell	Currie	Hatfield	McKay	Murphy	Downs	Hayward	Douglin	Burns	Hough	McGregor	Jarman (11)	Ayling (7)		76
10	07.09.2013	Sat	CCLP	H	BEDFONT SPORTS	1-0		0-0	McKay	Campbell	Taylor	Hatfield	McKay	Murphy	Downs	Hayward	Douglin	Burns	Hough	Ayling	Panayi (5)	Jarman (6)	Smith (7)	63
11	10.09.2013	Tue	CCL PCC1	A	Horley Town	3-2		1-1	Douglin, Hough, Jarman	Campbell	Currie	Henry	Panayi	McKay	Ayling	Hayward	Douglin	Burns	Hough	Jarman	McGregor (7)	Smith (6)		35
12	14.09.2013	Sat	CCLP	H	CHESSINGTON & HOOK UNITED	0-1		0-1		Campbell	Currie	Henry	Panayi	McKay	Ayling	Hayward	Douglin	McGregor	Hough	Jarman	Jackson (8)	Myers (3)	Smith (9)	47
13	21.09.2013	Sat	FAV 2Q	H	WHYTELEAFE (AET)	2-3	1-1	0-0	Hough (2)	Campbell	Currie	Hatfield	Taylor	Murphy	Downs	Hayward	Douglin	Jarman	Hough	Ayling	McGregor (9)	McKay (11)	Smith (7)	66
14	24.09.2013	Tue	CCLP	H	WEMBLEY	0-2		0-0		Campbell	Currie	Hatfield	Taylor	McKay	Downs	Hayward	McGregor	Jarman	Hough	Ayling	Smith (2)	Myers (6)	Douglin (11)	39
15	28.09.2013	Sat	CCLP	A	Windsor	3-1		1-0	Hough (2, 1 pen), Jarman	Campbell	Currie	Hatfield	Panayi	Murphy	Downs	McGregor	Myers	Jarman	Hough	Ayling	Smith (2)	Hayward (6)	McKay (10)	247
16	05.10.2013	Sat	CCLP	H	BADSHOT LEA	3-4		0-1	McGregor, Jarman, Hough (Pen)	Campbell	Currie	Hatfield	Panayi	Murphy	Downs	McGregor	Ayling	Jarman	Hough	Myers	Douglin (11)	Hayward (6)	Smith (2)	63
17	09.10.2013	Wed	CCL PCC2	A	AFC Croydon Athletic	7-2		2-0	Douglin (3), Jarman (2), Hough, Panayi	Pierson	Currie	Hatfield	Douglin	Taylor	Ayling	Hayward	McGregor	Jarman	Hough	Myers	Dewar (2)	Lediju (7)	Panayi (10)	73
18	12.10.2013	Sat	CCLP	A	Farnham Town	0-3		0-2		Campbell	Currie	Hatfield	Douglin	Taylor	Ayling	Hayward	McGregor	Jarman	Hough	Myers	Dewar (11)	Downs (7)		35
19	15.10.2013	Tue	CCLP	H	RAYNES PARK VALE	2-2		1-1	Jarman (2)	Campbell	Currie	Hatfield	Taylor	Murphy	Downs	McGregor	Douglin	Jarman	Hough	Ayling	Cottee (7)			41
20	19.10.2013	Sat	CCLP	H	FRIMLEY GREEN	3-0		0-0	Jarman, Douglin, McGregor	Campbell	Currie	Hatfield	Taylor	Murphy	Downs	McGregor	Douglin	Jarman	Hough	Ayling	Cottee (10)	Smith (2)		63
21	22.10.2013	Tue	SSC 1	H	CHERTSEY TOWN	1-0		1-0	Cottee	Campbell	Currie	Hatfield	Panayi	McKay	Downs	McGregor	Douglin	Cottee	Dewar	Ayling	Jarman (10)			61
22	29.10.2013	Tue	SCC 2	H	CHIPSTEAD	4-2		2-1	Jarman, Douglin, Cottee, Hough	Campbell	Downs,J	Hatfield	Panayi	Murphy	Downs,C	Hayward	Douglin	Jarman	Hough	Cottee	Taylor (6)	Lediju (9)		92
23	02.11.2013	Sat	CCLP	A	Hanworth Villa	3-3		3-1	Hough (2, 1 pen), Murphy	Campbell	Downs,J	Hatfield	Taylor	Murphy	Downs,C	Cottee	Douglin	Jarman	Hough	Ayling	Currie (2)	Dewar (7)	Panayi (8)	70
24	23.11.2013	Sat	CCLP	A	Molesey	2-1		1-0	Jarman, McGregor	Campbell	Currie	Myers	Panayi	Murphy	Ayling	Hayward	Douglin	Jarman	Hough	Cottee	Downs,J (3)	McGregor (8)		68
25	26.11.2013	Tue	SSC 2	A	Chipstead	0-3		0-1		Campbell	Currie	Downs,J	Taylor	McKay	McGregor	Hayward	Douglin	Dewar	Hough	Cottee	Ayling (7)	Jarman (9)		64
26	30.11.2013	Sat	CCLP	H	MOLE VALLEY SCR	4-0		3-0	Cottee (2), Murphy, Haywood	Campbell	Currie	Downs,J	Panayi	Murphy	Downs,C	Hayward	Douglin	McGregor	Hough	Cottee	Dewar (3)	Taylor (4)	McKay (6)	69
27	07.12.2013	Sat	CCLP	A	Colliers Wood United	2-0		0-0	Douglin, Jarman	Campbell	Currie	Myers	Panayi	Murphy	Ayling	Hayward	Douglin	McGregor	Hough	Cottee	Dewar (6)	McKay (2)	Jarman (9)	37
28	14.12.2013	Sat	CCLP	A	Wembley	3-1		1-0	Jarman (2), Hough	Campbell	Currie	Myers	Panayi	Taylor	Ayling	Hayward	Douglin	Jarman	Hough	Cottee	Hatfield (8)	Downs,C (11)		44
29	28.12.2013	Sat	CCLP	H	HORLEY TOWN	5-3		1-0	Ayling, Cottee (2), Jarman, Hough	Campbell	Currie	Hatfield	Panayi	Taylor	Ayling	Downs,C	Douglin	Jarman	Hough	Cottee	McGregor (8)	Myers (3)	Dewar (9)	87
30	11.01.2014	Sat	CCLP	H	FARNHAM TOWN	3-2		0-2	Cottee (2), Jarman	Campbell	Currie	Hatfield	Panayi	Taylor	Ayling	Downs,C	McGregor	Jarman	Dewar	Cottee	Hayward (2)	Myers (9)		61
31	21.01.2014	Tue	CCL PCC3	A	South Park (1945)	2-1		0-1	Hough (pen), Taylor	Campbell	Currie	Hatfield	Panayi	Taylor	Ayling	Downs,C	McGregor	Jarman	Dewar	Cottee	Hough (10)	Douglin (7)		64
32	25.01.2014	Sat	CCLP	H	ALTON TOWN	0-3		0-0		Campbell	Currie	Hatfield	Panayi	Taylor	Ayling	Downs,C	Douglin	Jarman	Hough	Cottee	McGregor (6)	Dewar (9)	Murphy (4)	94
33	04.02.2014	Tue	CCLP	H	HARTLEY WINTNEY (1945)																			
34	08.02.2014	Sat	CCLP	H	COVE																			
35	11.02.2014	Tue	CCLP	H	WINDSOR (1945)																			
36	15.02.2014	Sat	CCLP	A	Hartley Wintney																			
37	18.02.2014	Tue	CCLP	A	South Park (1945)																			
38	22.02.2014	Sat	CCLP	A	Badshot Lea																			
39	25.02.2014	Tue	CCLP	A	Raynes Park Vale (1945)																			
40	01.03.2014	Sat	CCLP	H	MOLESEY																			
41	04.03.2014	Tue	SCC 3	H	OLD HAMPTONIANS (1945)																			
42	08.03.2014	Sat	CCLP	H	COLLIERS WOOD UNITED																			
43	11.03.2014	Tue	CCL PCC4	A	Wembley or Chessington & Hook United																			
44	15.03.2014	Sat	CCLP	A	Horley Town																			
45	18.03.2014	Sat	CCLP	A	Westfield (1945)																			
46	22.03.2014	Sat	CCLP	H	ASH UNITED																			
47	29.03.2014	Sat	CCLP	A	Bedfont Sports																			
48	05.04.2014	Sat	CCLP	H	CAMBERLEY TOWN																			
49	12.04.2014	Sat	CCLP	A	Chessington & Hook United																			
50	15.04.2014	Tue	CCLP	A	Frimley Green (1945)																			
51	19.04.2014	Sat	CCLP	H	SOUTH PARK																			
52	21.04.2014	Mon	CCLP	A	Croydon (1130)																			
53	26.04.2014	Sat	CCLP	H	HANWORTH VILLA																			